

# SMaRT™ System

Surveillance, Monitoring and Right-time Trends



STC's SMaRT™ tool combines key concepts from the fields of public health epidemiology, performance management, and business intelligence.

SMaRT™ is a user-friendly interactive tool to monitor performance and manage public health initiatives, using data already gathered in your immunization registries. Users can interact with information, visualize trends and health outcomes, and monitor progress toward strategic goals.

## Visualize and Manage Challenges Facing Your Immunization Program by Leveraging Your Registry Data

The data in your system are continually updated and changing. You need flexibility to conduct on-the-fly investigations and you need the capability to drill down into the data ad-hoc.

There are data with many co-variables of interest that can be combined in multiple ways.

There are different types of information you want to extract:

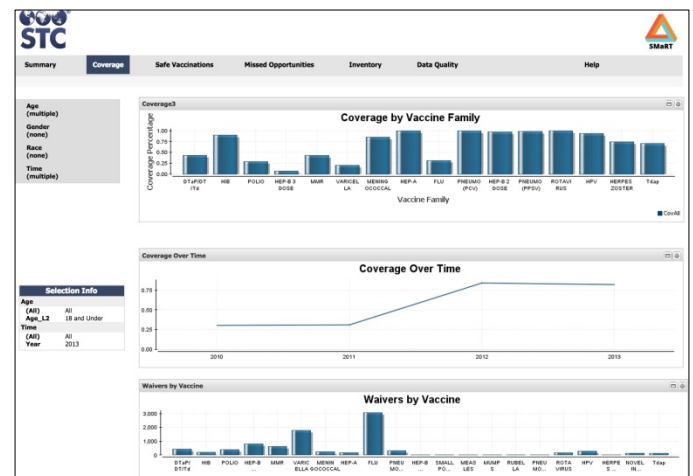
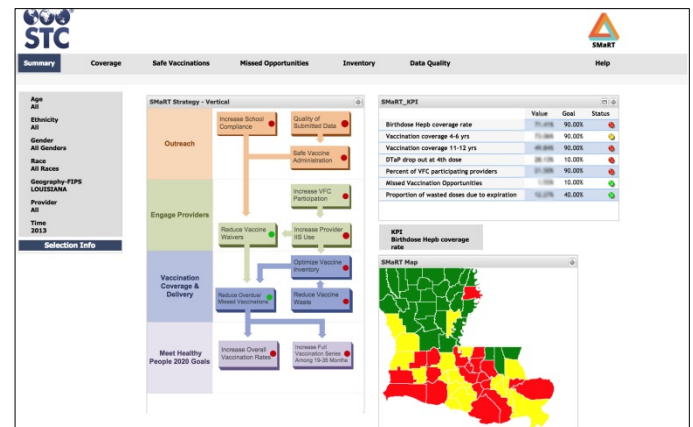
- *Immunization data*, such as coverage rates, on-schedule vaccinations, contraindications, and their trends.
- *Information on data quality*, such as missing field values and transcription (manual) errors.
- *Information on registry user(s)*, including user activities, staff assignments, electronic messages (successful vs. erroneous transmissions).
- *Program Evaluation metrics*, including metrics to satisfy grant activities and progress toward program-specific goals.

## SMaRT™ Addresses Your Challenges

- Strategy Map shows progress toward meeting the overall goals and objectives of your program.
- Key Performance Indicators show recent trends in quantifiable progress measures designed for your specific program goals.
- Color Map shows both areas of need and those meeting needs, according to your program's key performance indicators.
- Canvases provide interactive dashboards that each allow ad hoc data drill-down to investigate areas of need regarding any of the information listed above.

## Additional SMaRT™ Benefits

- Easy to deploy, easy to use.
- Timely – uses data you already have.
- Manages information, in addition to describing it.
- Data confidentiality, data sharing – assign user and viewing privileges.
- Decision-making – stay on top of program goals.
- Interactive, not passive!
- Relevant information – assists in management of progress toward goals.
- Actionable Information.
- Preemptive – avoid disasters.



Scientific Technologies Corporation

480.745.8500  
www.stchome.com